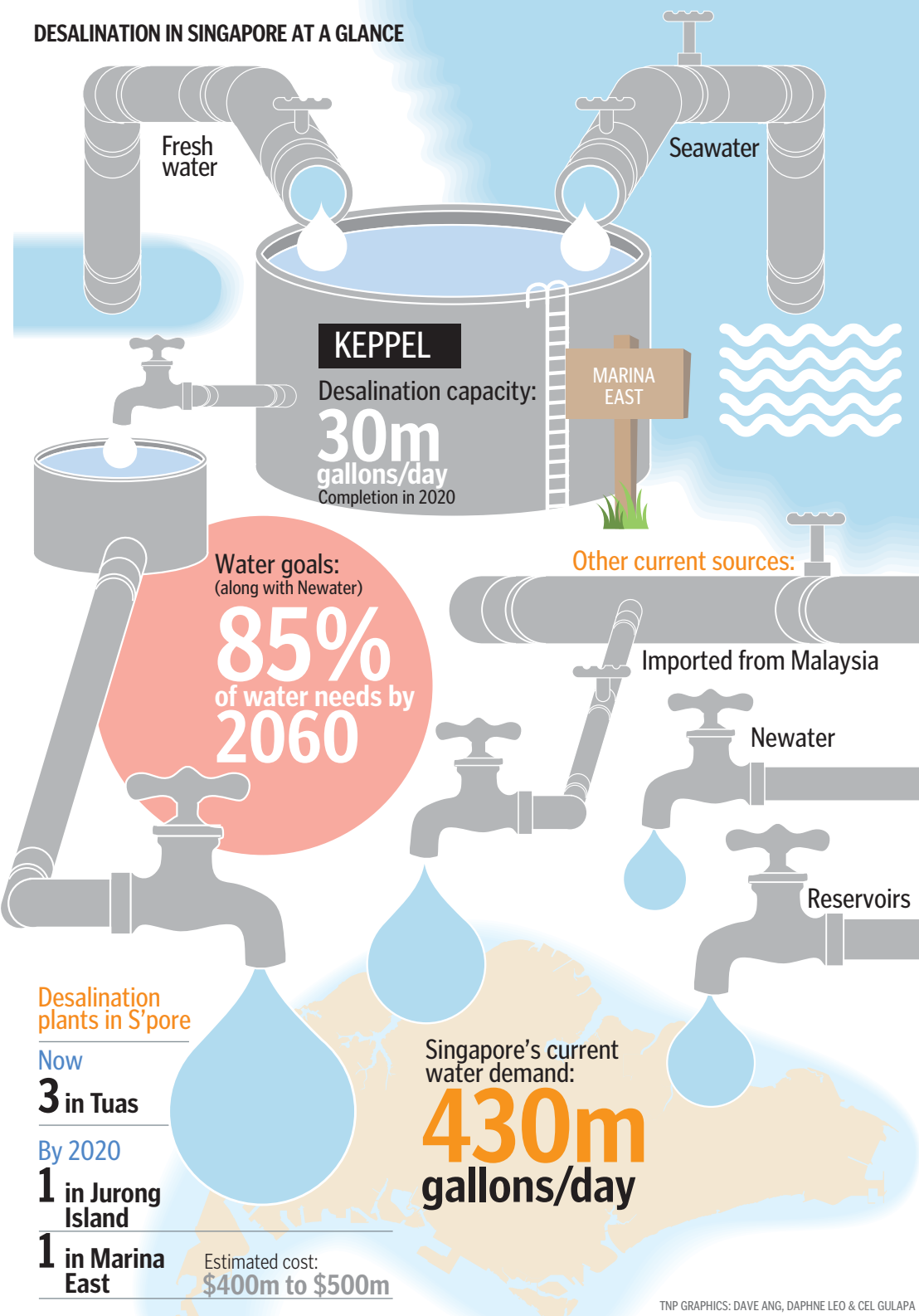


DESALINATION IN SINGAPORE AT A GLANCE



Fresh water

Seawater

KEPEL

Desalination capacity:

30m
gallons/day
Completion in 2020

MARINA EAST

Water goals:
(along with Newater)

85%
of water needs by
2060

Other current sources:

Imported from Malaysia

Newater

Reservoirs

Desalination plants in S'pore

Now

3 in Tuas

By 2020

1 in Jurong Island

1 in Marina East

Singapore's current water demand:

430m
gallons/day

Estimated cost:
\$400m to \$500m