

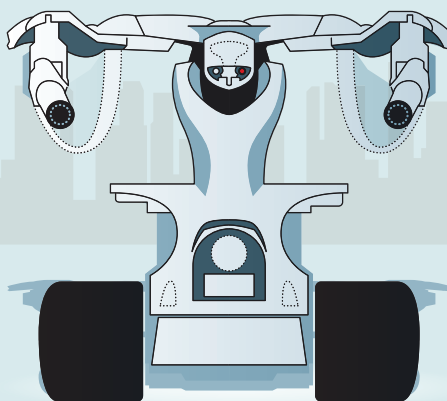
T-1

Appearances: **T3, TS**

The Series 1 was built to clear battlefields of human troops with its two .50-calibre miniguns.

Features

- Tank treads provide superior grip and manoeuvrability
- Laser targeting system with auditory, heat and motion sensors



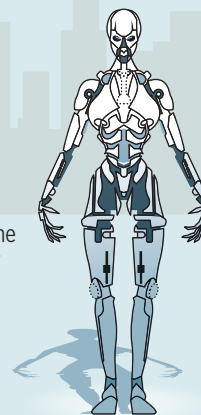
T-X

Appearance: **T3**

Skynet continues to use liquid metal technology, layering it over an advanced endoskeleton.

Features

- Able to reconfigure an arm to access inbuilt weapons such as the plasma cannon and flamethrower
- Capable of sustaining extreme damage that no other unit has been known to survive



Class of Terminators

The sixth instalment of The Terminator franchise, **Terminator: Dark Fate**, opens tomorrow. The apocalyptic time travel story of man versus killer machines picks up where **Terminator 2: Judgment Day** (1991) left off. The New Paper looks at some of the memorable Terminators that made their mark in movies

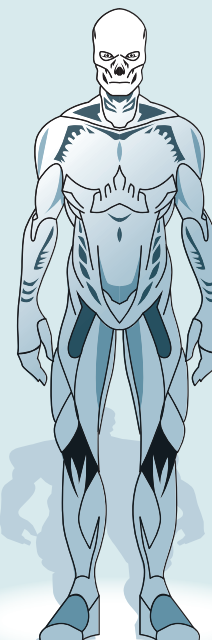
T-3000

Appearance: **TG**

Created by infecting humans with nanobots, completely rewriting their genetic coding. Leader of the Resistance, John Connor, became a T-3000

Features

- Invulnerable to physical attacks, bullets, explosions
- Able to “dissipate” into a mist-like swarm and reassemble itself almost immediately



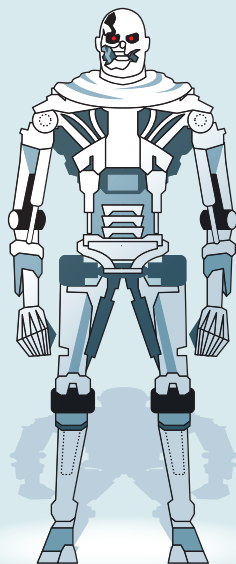
T-600

Appearance: **TS**

The first attempt at an Infiltrator machine featuring a titanium alloy endoskeleton. Precursor to the T-800 series.

Features

- Latex rubber skin for simple disguise
- Able to lift five times its own weight, punch through concrete and metal



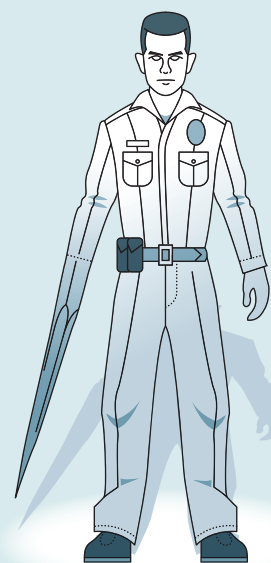
T-1000

Appearances: **T2, TG**

A Terminator made of a “mimetic polyalloy” – a liquid metal with molecular memory.

Features

- Able to morph into anything it touches and impersonate humans
- Resist physical attacks and regenerate quickly
- Able to fashion solid weapons from its limbs



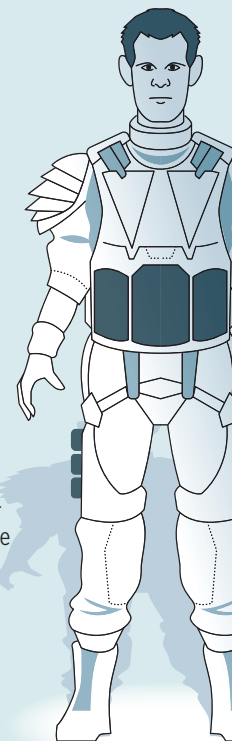
T-5000

Appearance: **TG**

Also known as Alex, the T-5000 is a humanoid host and personification of the Skynet network.

Features

- Able to infect humans with nanobots
- Most advanced Terminator ever created and undetectable as a robot



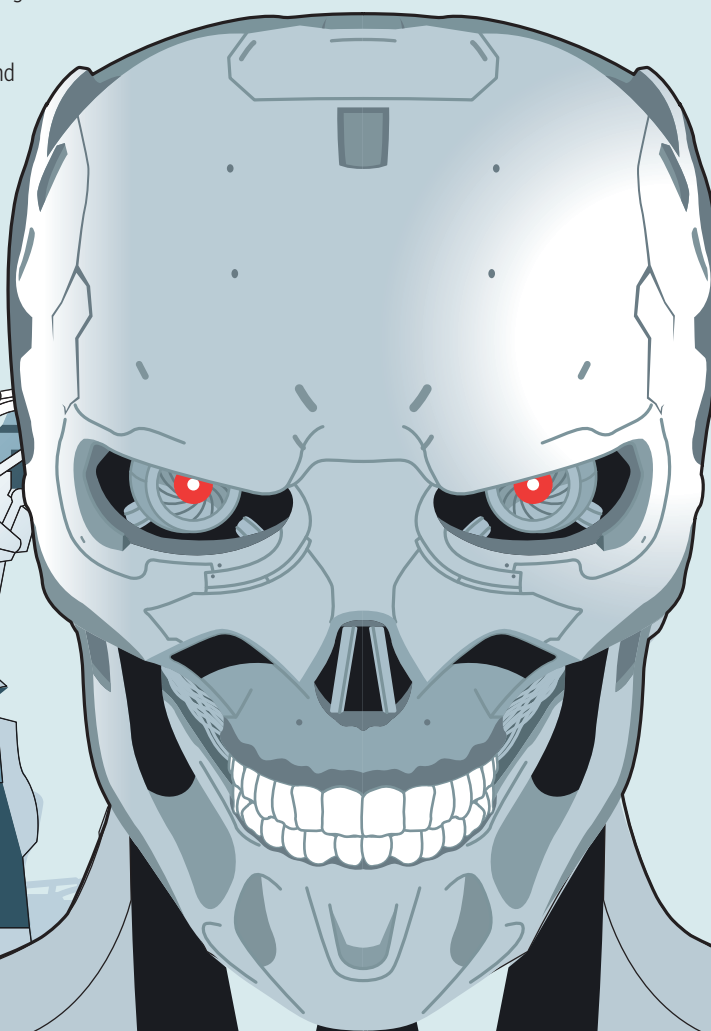
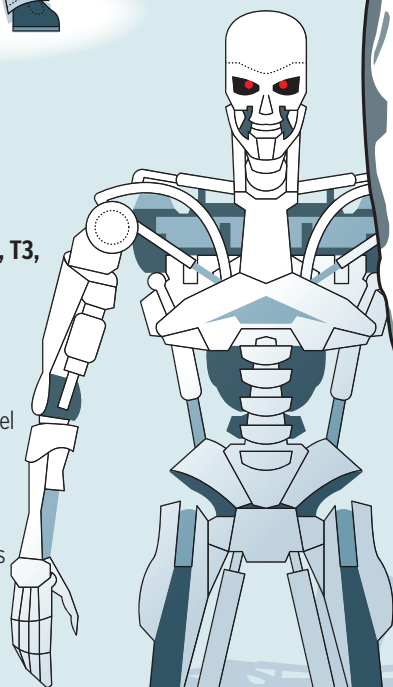
T-800/850

Appearances: **T1, T2, T3, TS, TG, Dark Fate**

Skynet’s first successful Infiltrator unit against the Resistance. The later T-850 model ran an advanced human psychology programme. These Terminators can last for 120 years on one power cell.

Features

- Hyperalloy covered with human tissue
- Heads-up display to perform internal checks



Rev-9

Appearance: **Terminator: Dark Fate**

The latest cyborg to join the family. This two-in-one Terminator model has a traditional solid endoskeleton body, covered with a liquid metal exoskeleton (similar to the T-X model). This advanced Terminator model is sent from the future to terminate the protagonists in **Dark Fate**.

Features

- The ability to split into two fully autonomous Terminators, making it twice as deadly
- Able to create solid – and sharp – weapons from all its body parts