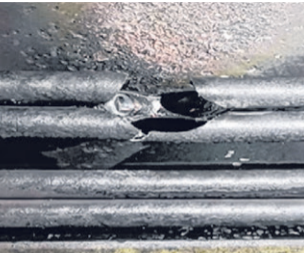


What caused the 3-line MRT disruption on Oct 14



1 A burnt section of 22 kilovolt cables between Tuas Link station and Tuas West Road station triggered a power fault.



2 The fault activated circuit breakers nearby, but one failed to trip and isolate the power fault as designed due to a melted trip coil.

3 • The circuit breaker failure caused a secondary protection system to trip, cutting off power supply from the Tuas Depot substation.
• This affected a larger zone of stations along the North-South and East-West Lines (NSEWL).

4 Operator SMRT decided to draw power from the Buona Vista substation, which supplies power to the Circle Line (CCL).

5 An SMRT staff member and supervisor misread equipment at the substation and wrongly assumed the fault in Tuas had been isolated.

6 Failure to isolate the fault before drawing power led to a voltage dip at the Buona Vista substation, causing a power trip that affected the CCL.